
**Simmons College, the “curriculum,” and me:
Seeking ethics of care
in LIS education**

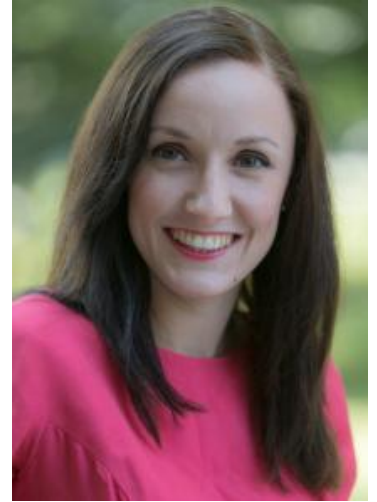
Molly Brown

molly.brown2@simmons.edu // @msmollyebrown

From Human Rights to Feminist Ethics: Radical Empathy in the Archives



Michelle Caswell



Marika Cifor

Feminist ethics of care:



“An ethics of care, which we situate here under the larger tent of feminist ethics, stresses the ways people are linked to each other and larger communities through webs of responsibilities.”

Most successful syllabus/resource/curriculum:



Simmons syllabi:

10/12 syllabi studied included this course goal:

“[To] Evaluate and create information services and/or systems to reflect and respond to the needs of diverse communities and stakeholders.”

Simmons College's archival management curriculum

Core LIS classes

LIS 415: Information Organization

LIS 407: Reference/Information Services

LIS 488: Technology for Information Professionals

Core archives classes

LIS 438: Introduction to Archival Methods and Services

LIS 440: Archival Access and Use

LIS 442: Establishing Archives and Manuscripts Programs

Option of one:

LIS 456: Records Management

LIS 476: Archives and Cultural Heritage Outreach

LIS 441: Appraisal of Archives and Manuscripts

LIS 433: Oral History

Preservation course:

LIS 439: Preservation Management for Libraries and Archives

or

LIS 448: Digital Stewardship

Courses emphasized for case study:

Core LIS classes

LIS 488: Technology for Information Professionals

Core archives classes

LIS 440: Archival Access and Use

LIS 433: Oral History

Preservation course:

LIS 448: Digital Stewardship

Working with professors & students

Two larger problems:

- *Classrooms/professor work:*
 - Seeing ethics of care as a “special topic”
- *Sharing concept with students:*
 - Fear of being “too emotional,” conflating emotion with empathy and affect

The work continues:

Looking to more concretely incorporate ethics of care:

- Look outside the SLIS program. (School of Social Work in the same building)
- Ask for more programming for affective work and labor in all portions of the curriculum: reference, design, and best practice.